

**SEA CONTAINER SIZES**

	20' Dry Cargo Container		40' Dry Cargo Container	
SPECIFICATIONS	8'6" STANDARD		8'6" STANDARD	
Inside Cubic Capacity	32.8cu.m (1,158 cu.ft)		67.2cu.m (2,372 cu.ft)	
Cargo Capacity	21,640 kg (47,716 lbs.)		26,500 kg (58,433 lbs.)	
Tare weight	2,360 kg (5,204 lbs.)		3,980 kg (8,776 lbs.)	
	OUTSIDE:	INSIDE:	OUTSIDE:	INSIDE:
Length	6.05m (19.84 ft)	5.90m (19.35 ft)	12.19m (40.00 ft)	12.01m (39.39 ft)
Width	2.44m (8.00 ft)	2.35m (7.71 ft)	2.44m (8.00 ft)	2.35m (7.71 ft)
Height	2.59m (8.50 ft)	2.38m (7.80 ft)	2.59m (8.50 ft)	2.38m ( 7.80 ft)
DOOR SIZE:				
Height	2.28m (7.48 ft)		2.28m(7.48 ft)	
Width	2.33m (7.64 ft)		2.33m(7.64 ft)	



	40' Dry Cargo Super Hi-Cube Container	
SPECIFICATIONS	9'6" SUPER HI-CUBE	
Inside Cubic Capacity	75.9cu.m (2,679 cu.ft)	
Cargo Capacity	26,330 kg (58,058 lbs.)	
Tare weight	4,150 kg (9,150 lbs.)	
	OUTSIDE:	INSIDE:
Length	21.19m (19.84 ft)	12.01m (39.39 ft)
Width	2.44m (8.00 ft)	2.35m (7.71 ft)
Height	2.90m (9.50 ft)	2.69m (8.82 ft)
DOOR SIZE:		
Height	2.58m (8.46 ft)	
Width	2.35m (7.71 ft)	



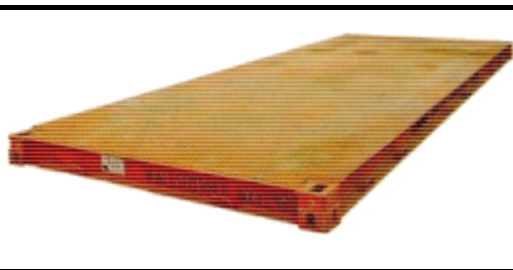
20' Reefer Containers ( FINSAM )		
	MODEL 2107	MODEL 2061/2084
<b>SPECIFICATIONS:</b>		
<b>WEIGHTS:</b>		
<b>Max. Gross Weight</b>	24,000 kg	22,860 kg
<b>Net Tare Weight</b>	3,230 kg	3,800 kg
<b>Payload</b>	20,770 kg	19,060 kg
<b>DIMENSIONS:</b>	<b>INSIDE:</b>	<b>INSIDE:</b>
<b>Length</b>	5,485 mm	5,170 mm
<b>Width</b>	2,250 mm	2,235 mm
<b>Height</b>	2,260 mm	2,250 mm
<b>DOOR OPENING:</b>		
<b>Width</b>	2,230 mm	2,235 mm
<b>Height</b>	2,220 mm	2,215 mm
<b>VOLUMES:</b>		
<b>Capacity</b>	27.9m <sup>3</sup> (985 cu.ft)	26.0m <sup>3</sup> (918 cu.ft)



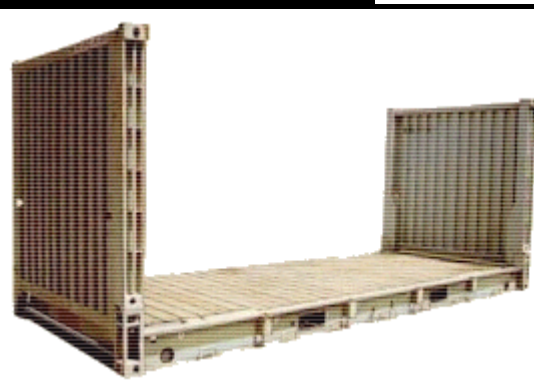
20' BIN	
<b>SPECIFICATIONS:</b>	
<b>Cargo Capacity</b>	21,960 kg (48,421 lbs.)
<b>Max. Gross Weight</b>	2,040 kg (4,498 lbs.)
	<b>OUTSIDE:</b>
<b>Length</b>	6.06m (19.88 ft)
<b>Width</b>	2.44m (8.00 ft)
<b>Height</b>	1.30m (4.25 ft)



	20' Bolster (PLATFORM)	40' Bolster (PLATFORM)
<b>SPECIFICATIONS</b>		
<b>Cargo Capacity</b>	23,460 kg (51,729 lbs.)	26,260 kg (57,903 lbs.)
<b>Tare Weight</b>	1,940 kg (4,277 lbs.)	4,220 kg (9,305 lbs.)
<b>Length (overall)</b>	6.06 m (19.88 ft)	12.19 m (40.00 ft)
<b>Width</b>	2.44 m (8.00 ft)	2.44 m (8.00 ft)
<b>Height</b>	0.23 m (0.66 ft)	0.65 m (2.13 ft)



	20' FLATRACK		40' FLATRACK	
<b>SPECIFICATIONS</b>				
<b>Cargo Capacity</b>	approx 20,015 kg (44,133 lbs.)		approx 30,476 kg (67,200 lbs.)	
<b>Tare weight</b>	up to 3,100 kg (6,835 lbs.)		approx 5,646 kg (12,450 lbs.)	
	<b>OUTSIDE:</b>	<b>INSIDE:</b>	<b>OUTSIDE:</b>	<b>INSIDE:</b>
<b>Length</b>	6.06m (19.88 ft)	5.85m (19.19 ft)	12.19m (40.00 ft)	12.05m (39.52 ft)
<b>Width</b>	2.44m (8.00 ft)	2.23m (7.31 ft)	2.44m (8.00 ft)	2.12m (6.95 ft)
<b>Height</b>	2.44m (8.00 ft)	2.15m (7.04 ft)	2.44m (8.00 ft)	1.96m (6.43 ft)
	or 2.59m (8.50 ft)		or 2.59m (8.50 ft)	



	20' OPEN TOP CONTAINER		40' OPEN TOP CONTAINER	
<b>SPECIFICATIONS</b>	<b>8'6" STANDARD</b>		<b>8'6" STANDARD</b>	
<b>Inside Cubic Capacity</b>	32.6cu.m (1,151 cu.ft)		66.7cu.m (2,355 cu.ft)	
<b>Cargo Capacity</b>	21,700 kg (47,839 lbs.)		26,530 kg (58,490 lbs.)	
<b>Tare weight</b>	2,300 kg (5,071 lbs.)		3,950 kg (8,710 lbs.)	
	<b>OUTSIDE:</b>	<b>INSIDE:</b>	<b>OUTSIDE:</b>	<b>INSIDE:</b>
<b>Length</b>	6.06m (19.88 ft)	5.88m (19.29 ft)	12.19m (40.00 ft)	12.01m (39.39 ft)
<b>Width</b>	2.44m (8.00 ft)	2.33m (7.64 ft)	2.44m (8.00 ft)	2.33m (7.64 ft)
<b>Height</b>	2.59m (8.50 ft)	2.31m (7.58 ft)	2.59m (8.50 ft)	2.31m (7.58 ft)
<b>DOOR SIZE:</b>				
<b>Height</b>	2.28m (7.48 ft)		2.28m (7.48 ft)	
<b>Width</b>	2.33m (7.64 ft)		2.33m (7.64 ft)	

